



GAT MONTHLY MEMBERSHIP PROGRESS REPORT

Results as of: 2/28/2021

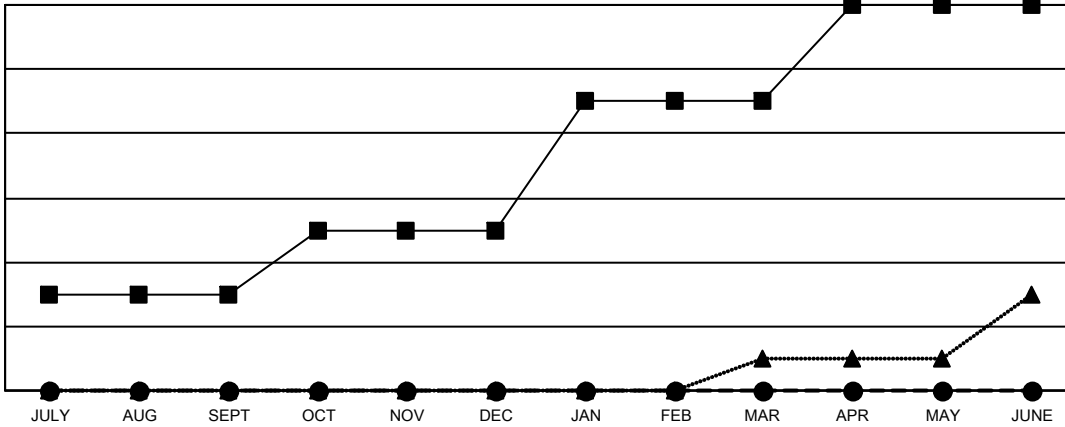
Multiple District 22

LOCATION: MARYLAND

Clubs			
RESULTS FOR 2020-2021			
QUARTER	NEW CLUB GOAL	NEW CLUBS	DROPPED CLUBS
JULY/AUG/SEPT	3	0	1
OCT/NOV/DEC	2	0	1
JAN/FEB/MAR	4	0	0
APR/MAY/JUNE	3	0	0

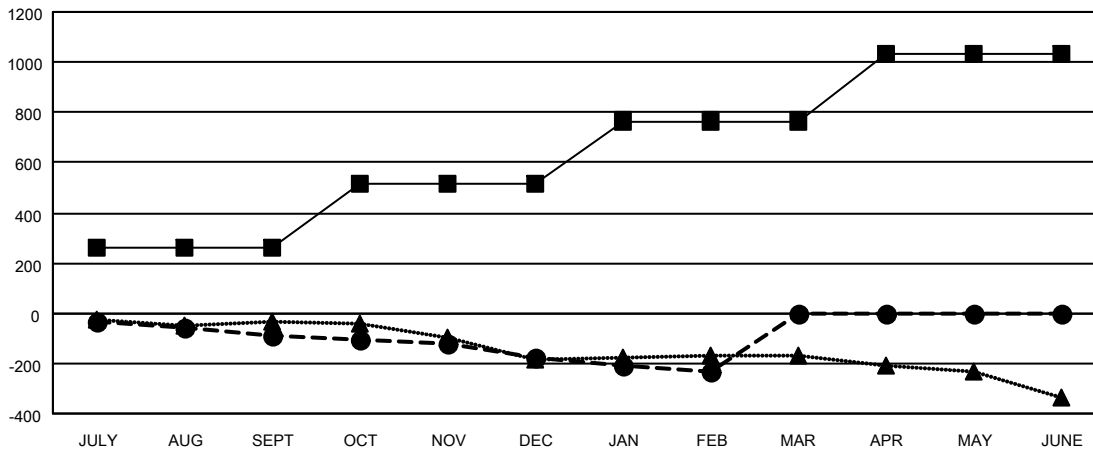
Members			
RESULTS FOR 2020-2021			
QUARTER	MEMBER GROWTH NET GOAL	MEMBER GROWTH ACTUAL	DROPPED MEMBERS ACTUAL (including transfers)
JULY/AUG/SEPT	262	91	164
OCT/NOV/DEC	252	97	172
JAN/FEB/MAR	252	50	87
APR/MAY/JUNE	267	0	0

GOALS AND ACTUAL NEW CLUBS CUMULATIVE



- - CURRENT YEAR GOALS FOR NEW CLUBS
- - CURRENT YEAR ACTUAL NEW CLUBS
- ▲ - LAST YEAR ACTUAL NEW CLUBS

GOALS AND ACTUAL MEMBERS CUMULATIVE



- - MEMBER GROWTH NET GOAL
- - MEMBER GROWTH ACTUAL
- ▲ - LAST YEAR MEMBERSHIP ACTUAL

DROPPED CLUBS: 2	
<u>DROPPED MEMBERS</u>	
DECEASED	96
CLUB CANCELLED	0
OTHER	327
TOTAL	423

70 CLUBS OF 210 ADDED 1 OR MORE NEW MEMBERS

[CLICK HERE FOR CUMULATIVE MEMBERSHIP DATA](#)

<u>GENDER DISTRIBUTION</u>	
MALE	3,932 (65.15%)
FEMALE	2,103 (34.85%)
TOTAL FAMILY UNIT MEMBERS	1,166
FAMILY MEMBERS PAYING HALF DUES	605